



Stoneacre
Properties



New Forest Way, Leeds, LS10 4GH

£120,000

**** SUPERB APARTMENT IDEAL FOR FIRST TIME BUYERS/INVESTORS OFFERED WITH NO CHAIN*** Stoneacre Properties are delighted to offer for sale a fantastic apartment on the New Forest Village development. The property consists of a spacious hall way, two bedrooms, bathroom, living room and kitchen. The property also benefits from allocated parking, easy access to motorway links and is in a great location for commuting to Leeds City Centre. Early viewings are advised to avoid disappointment.

ENTRANCE HALLWAY



Central heating radiator.

LOUNGE



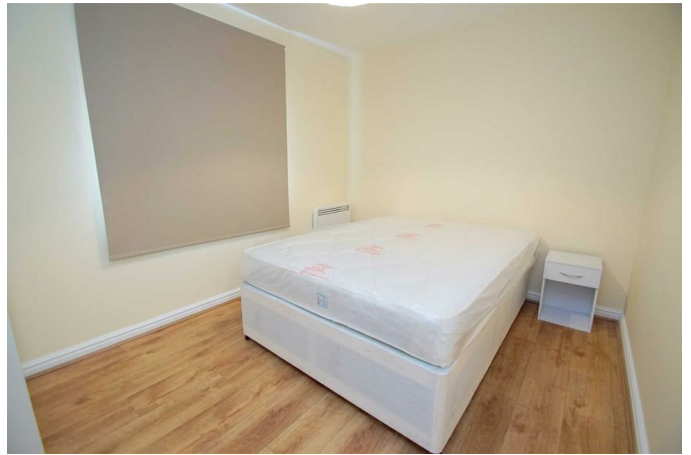
Window to the front elevation. Central heating radiator.

KITCHEN



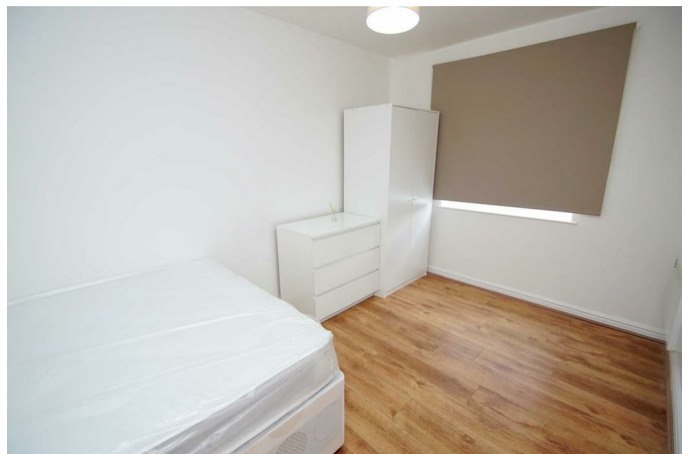
Range of wall and base units. Integrated cooker with gas hob.

BEDROOM ONE



Double glazed window to the front. Central heating radiator.

BEDROOM TWO



Double glazed window to the front. Central heating radiator.

BATHROOM



Bath with shower above. Low flush w.c. Wash hand basin.

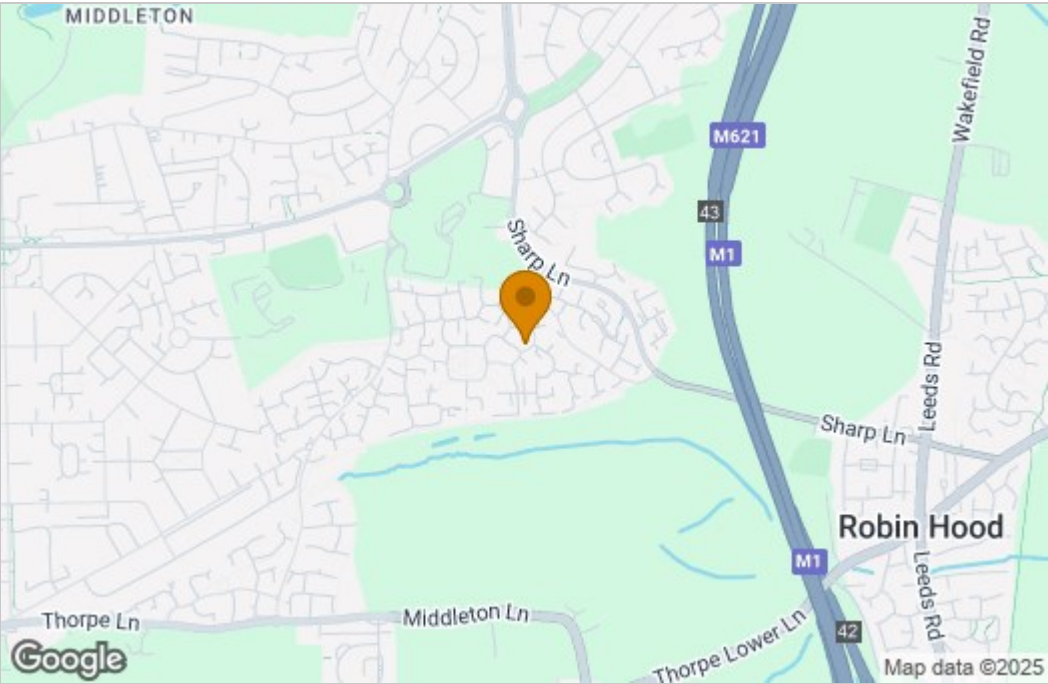
EXTERNAL



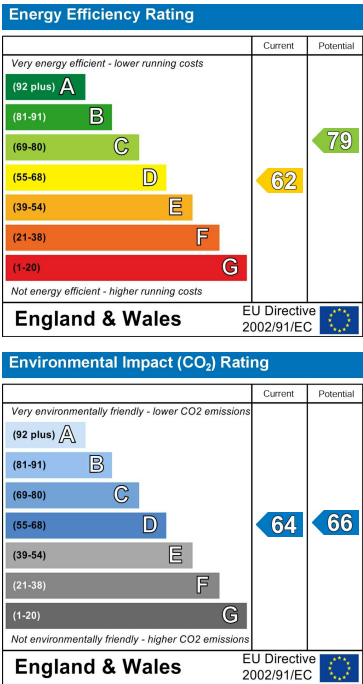
Allocated parking space outside of the property.

Floor Plan

Area Map



Energy Efficiency Graph



These particulars, whilst believed to be accurate are set out as a general outline only for guidance and do not constitute any part of an offer or contract. Intending purchasers should not rely on them as statements of representation of fact, but must satisfy themselves by inspection or otherwise as to their accuracy. No person in this firms employment has the authority to make or give any representation or warranty in respect of the property.

